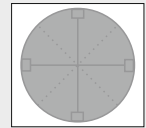
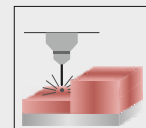




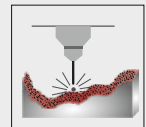
Track & Trace Ready*



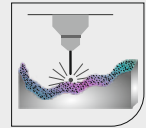
Indexer



3-Axis Step Marking/Engraving



3-Axis Marking/Engraving



3-Axis Annealing



Vision Inspection System*

Disclaimer: These images are for illustration purpose only, the machine look may vary in real time

ROTO

Productive And Versatile 3-Axis Laser Machine

Benefits at a Glance

3-Axis marking, engraving laser system.

Track and trace ready.

Integrated optical inspection system.

Semi-automatic with high productivity.

High precision & selectable multistation functionality.

European components selected carefully

Rotary Indexer

Programmable, multi-indexing options, semi-automatic.

Vision for post-inspection

Marking/engraving quality verification, OCV, Code quality verification (AIM-DPM or ISO/IEC TR 29158) positioning information, measurements etc.

3-Axis Laser System

3-Axis Laser marking/engraving system guided by SCANLAB GmbH.
Highest Quality DPM of Barcodes (ISO/IEC 16022, SEMI, SPEC 2000, FDA UDI)

High Precise Auto z-axis

High precision servo controlled auto z-axis for laser focussing.

Process view camera

Live view of the laser process.

Vision for pre-inspection

Part orientation, part segregation, part presence or absence and other pre-inspection options.

Safety curtains

Class 1 safe workstation with CE Compliance

Cooling system

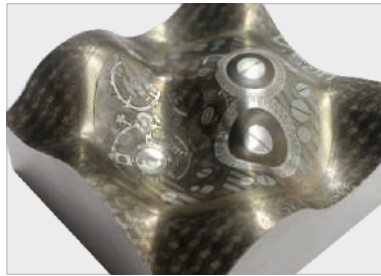
Machine air conditioning system.

User Control Interface & iTracy™

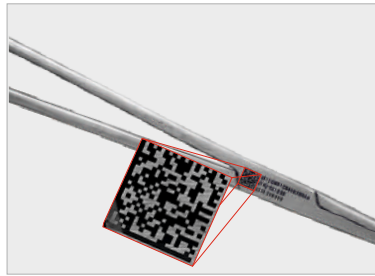
Custom made UI with Single Process Control Interface. Real time events, alarms, health info, Production reports, live view & Authentication levels etc.



3-Axis Laser Marking & Engraving



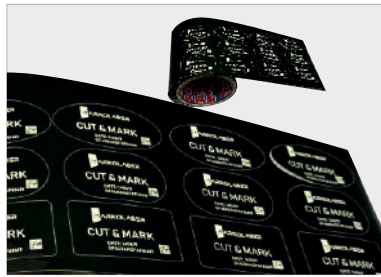
Annealing / Colored Marking on 3D Surface



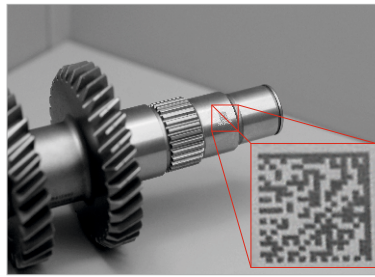
Medical Part UDI marking, Corrosion & Passivation Resistant High Contrast black Annealing



2D DPM & Step Marking on Electrical MCB



Cutting & Marking on Special Adhesive TESA & 3M Tapes



DPM Of Data Matrix Code On Automotive Gear Assembly Part



Step Marking on Switch

Technical Specifications	ML ROTO S	ML ROTO M	ML ROTO L
Enclosure Safety	Class I	Class I	Class I
Base Diameter	550 mm	750 mm	950 mm
Station selection	2/4 (selectable mode)	2/4	2/4
Max. Work Piece Weight	5 kg	10 kg	15 kg
Max. Work Piece Size (W/D/H)	100 x 100 x 100 mm	200 x 200 x 150 mm	250 x 250 x 200 mm
Compatible Laser Types	Fibre, UV, CO2, Green	Fibre, UV, CO2, Green	Fibre, UV, CO2, Green
Options			
Code Reader Integrated Laser Marking Head	■	■	■
Dual Laser Heads (2 Station Mode)	□	■	■
Auto Loading	□	■	■
Auto Unloading	□	■	■
Max. Marking Area	110 x 110 mm	150 x 150 mm	225 x 225 mm
Pre-inspection vision system (OCR, Dents, positioning, other defects*)	■	■	■

■ Yes □ No

Spinks India : Plot no.135, Pace City-I,
Sec 37 Gurugram 122001, Haryana. India.
+91 9210626626

Email : info@markolaser.com

Website : www.markolaser.com

Locations :

INDIA

Gurugram | Manesar | Ahmadabad | Mumbai | Chennai | Pune | Tirupur | Kolkata | Delhi | Bangalore | Hyderabad | Haridwar

GLOBAL

Switzerland | S.Africa | Bangladesh | UAE

